

# Product Information: Crawler Excavator

## R 938

Litronic®

### Generation

8

### Engine

295 HP / 220 kW

Tier 4 Final

### Operating Weight

39,050 kg / 86,090 lb

### Bucket Capacity

1.90 – 3.00 m<sup>3</sup> / 2.48 – 3.92 yd<sup>3</sup>



# LIEBHERR

# Experience the Progress

## R 938

### Safety

- Panoramic visibility with no obstructions and camera on the rear and the right side for enhanced safety
- Tilttable console for easy and safe access to cab
- ROPS-certified cab structure
- Emergency exit via the rear cab window
- Right window and windshield in laminated and tinted glass

### Equipment

- Large choice of types and lengths of equipment
- Safety check valves for hoist and stick cylinders (option)
- Guaranteed maintenance thanks to automatic centralised lubrication system

### Maintenance

- Innovative servicing concept, with service points accessible from ground level
- Engine oil, hydraulic oil, fuel and urea (diesel exhaust fluid) levels visible on the display
- New concept for lateral access to uppercarriage and large maintenance platform





### **Comfort**

- Spacious, air-conditioned work space
- Airsprung seat with vertical and longitudinal suspension
- Easy-to-use high resolution 7" colour touchscreen
- Completely retractable front cab window
- New LED lighting as standard

### **Engine**

- New engine that conforms with the US EPA Tier 4 Final exhaust emissions standard
- Automatic engine idling / speed increase

### **Undercarriage**

- Choice of 2 different robust x-shaped undercarriages with integrated eyes for secure transport
- Easy maintenance
- Maintenance-free track chains and track rollers with lifetime lubrication
- Extra storage (option)

# Technical Data



## Engine

<b>Rating</b>	per SAE J1349 295 HP (220 kW) at 1,800 rpm
	per ISO 9249 299 HP (220 kW) at 1,800 rpm
<b>Torque</b>	1,421 Nm at 1,350 rpm / <b>1,048 lbf ft at 1,350 rpm</b>
<b>Model</b>	Liebherr D944 A7-24
<b>Type</b>	4 cylinder in-line
Bore	130 mm / <b>5.1 in</b>
Stroke	150 mm / <b>5.9 in</b>
Displacement	8.0 l / <b>488 in³</b>
<b>Engine operation</b>	4-stroke diesel Common-Rail Turbo-charged and after-cooler
<b>Exhaust gas treatment</b>	Tier 4 Final SCR Filter Passive regeneration by thermo management
<b>Cooling system</b>	Water-cooled and oil cooler, after-cooled and fuel cooled
<b>Air cleaner</b>	Dry-type air cleaner with pre-cleaner
<b>Fuel tank</b>	729 l / <b>193 gal</b>
<b>Urea tank</b>	90 l / <b>24 gal</b>
<b>Electrical system</b>	
Voltage	24 V
Batteries	2 x 135 Ah/12 V
Alternator	Three-phase current 28 V/140 A
Engine idling	Sensor controlled



## Hydraulic Controls

<b>Power distribution</b>	Via control valves, simultaneous and independent actuation of undercarriage, swing drive and equipment
<b>Electric servo circuit</b>	Electro-hydraulic control
<b>Equipment and swing</b>	Proportional via joystick levers
Travel	– Proportional control via foot pedals or removable levers – Automatic or manual speed adjustment
<b>Additional functions</b>	Proportional regulation via foot pedals or mini-joystick



## Hydraulic System

<b>Hydraulic system</b>	Positive Control hydraulic system. Demand-based, double independent pump flows Features high system dynamics and sensitivity provided by integrated system controlling Independent circuit for rotation
<b>Hydraulic pumps</b>	
For equipment and travel drive	Liebherr, variable displacement, swashplate double pump
Max. flow	2 x 315 l/min. / <b>2 x 83 gpm</b>
Max. pressure	380 bar / <b>5,511 psi</b>
For swing drive	Swashplate pump, closed-loop circuit
Max. flow	205 l/min. / <b>54 gpm</b>
Max. pressure	400 bar / <b>5,802 psi</b>
<b>Pump management</b>	Electronic management synchronous to the control block
<b>Hydraulic tank</b>	239 l / <b>63 gal</b>
<b>Hydraulic system</b>	max. 475 l / <b>max. 126 gal</b>
<b>Hydraulic oil filter</b>	1 main return filter with integrated partial micro filtration (10 µm / <b>1,250 mesh</b> )
<b>Cooling system</b>	Compact cooler, consisting of a water cooler, with hydraulic oil cooler, gearbox oil cooler, fuel cooler and after-cooler cores and hydrostatically driven fan
<b>MODE selection</b>	Adjustment of engine and hydraulic performance via a mode pre-selector to match application, e.g. for especially economical and environmentally friendly operation or for maximum digging performance and heavy-duty jobs
<b>Engine speed and performance setting</b>	Stepless adjustment of engine output and hydraulic power via engine speed



## Swing Drive

<b>Drive</b>	Liebherr swashplate motor with integrated brake valve and torque control
<b>Transmission</b>	Liebherr compact planetary reduction gears
<b>Swing ring</b>	Liebherr, sealed race ball bearing swing ring, internal teeth
<b>Swing speed</b>	0 – 8.6 rpm stepless
<b>Swing torque</b>	117 kNm / <b>86,295 lbf ft</b>
<b>Holding brake</b>	Wet multi-disc (spring applied, pressure released)



## Operator's Cab

<b>Cab</b>	ROPS safety cab structure (roll-over protection system according to ISO 12117-2:2008) with windscreen, totally or partially retractable (only upper part), under cab roof, LED work headlights integrated in the ceiling, a door with a sliding window (can be opened on both sides), large storing box and several stowing possibilities, shock-absorbing suspension, laminated right hand side and roof windows, all windows tinted, separate extendible window shades for the sunroof window and windscreen, cigarette lighter and 24 V plug, 12 V plug, cup holder, mobile phone storage net
<b>Operator's seat</b>	Liebherr-Comfort seat, airsprung with automatic weight adjustment, vertical and longitudinal seat damping including consoles and joysticks. Seat and armrests adjustable separately and in combination (adjustable in width, height and inclination), seat heating as standard
<b>Arm consoles</b>	Oscillating consoles with seat, tiltable console left
<b>Operation and displays</b>	Large high-resolution operating unit, intuitive, color display with touchscreen, video-compatible, numerous setting, control and monitoring options, e.g. air conditioning control, fuel consumption, machine and attachment parameters
<b>Air-conditioning</b>	Automatic air-conditioning, recirculated air function, fast de-icing and demisting at the press of a button, air vents can be operated via a menu. Recirculated air and fresh air filters can be easily replaced and are accessible from the outside. Heating-cooling unit, designed for extreme outside temperatures, sensors for solar radiation, inside and outside temperatures
<b>Noise emission</b>	
ISO 6396	$L_{pA}$ (inside cab) = 72 dB(A)
2000/14/EC	$L_{WA}$ (surround noise) = 105 dB(A)



## Undercarriage

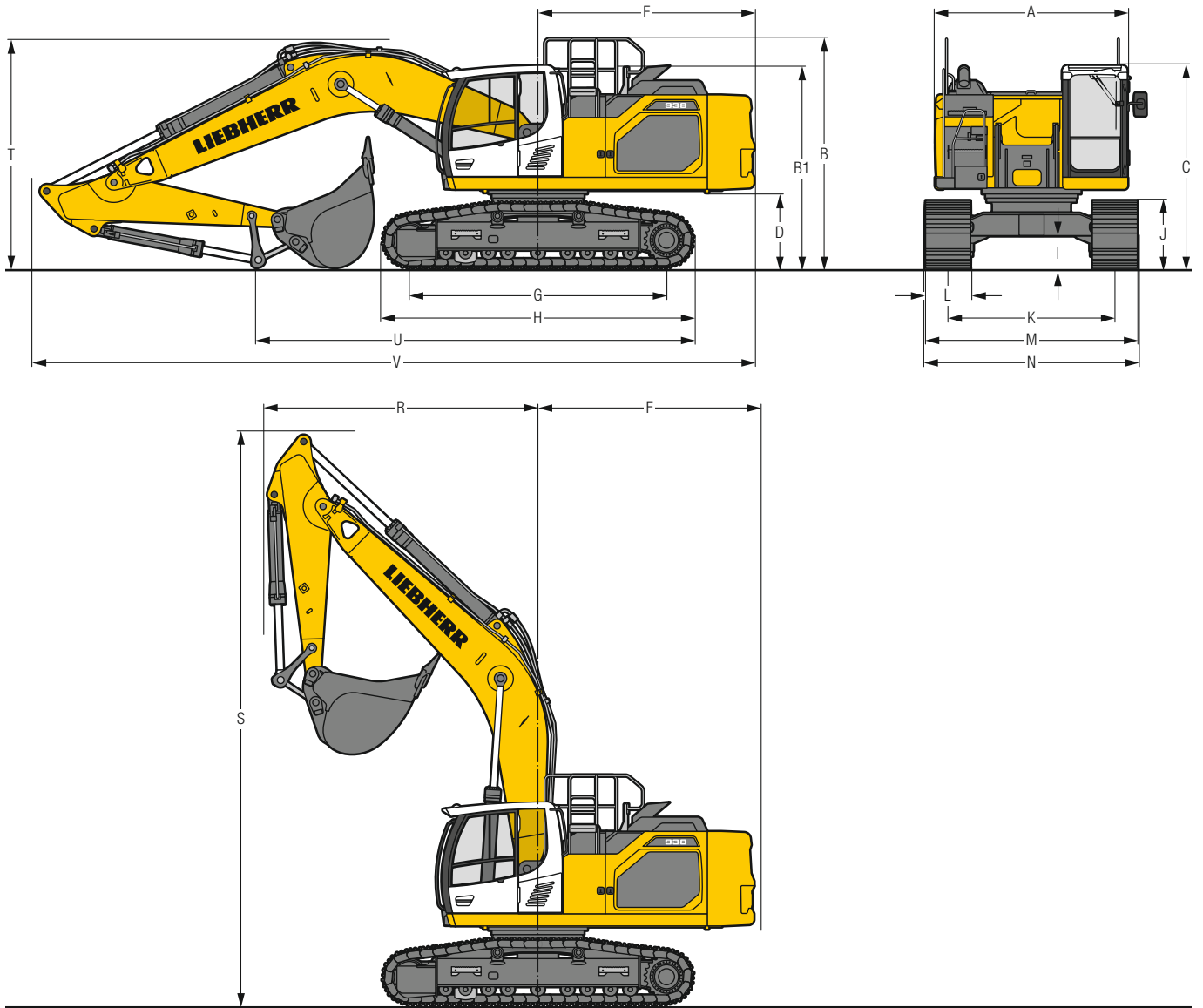
<b>Versions</b>	
LC	Gauge 2,590 mm / <b>8'6"</b>
WLC	Gauge 2,740 mm / <b>9'</b>
<b>Drive</b>	Liebherr swashplate motor with brake valves on both sides
<b>Transmission</b>	Liebherr planetary reduction gear
<b>Maximum travel speed</b>	Low range 3.3 km/h / <b>2.1 mph</b> High range 5.4 km/h / <b>3.4 mph</b>
<b>Drawbar pull on crawler</b>	325 kN / <b>73,060 lbf</b>
<b>Track components</b>	D7, D7G, maintenance-free
<b>Track rollers/Carrier rollers</b>	9/2
<b>Tracks</b>	Sealed and greased
<b>Track pads</b>	Triple grouser
<b>Holding brake</b>	Wet multi-disc (spring applied, pressure released)
<b>Brake valves</b>	Integrated into travel motor
<b>Lashing eyes</b>	Integrated



## Equipment

<b>Type</b>	Combination of resistant steel plates and cast steel components
<b>Hydraulic cylinders</b>	Liebherr cylinders with seal and guidance systems
<b>Bearings</b>	Sealed, low maintenance
<b>Lubrication</b>	Liebherr central lubrication system
<b>Hydraulic connections</b>	Pipes and hoses equipped with SAE split-flange connections
<b>Buckets</b>	Standard equipped with Liebherr tooth system

# Dimensions



	LC	mm/ft in				WLC	mm/ft in			
<b>A</b> Uppercarriage width		2,990** / 9'10"***					2,990** / 9'10"***			
<b>B</b> Uppercarriage height		3,570 / 11' 9"					3,570 / 11' 9"			
<b>B1</b> Uppercarriage height (handrails folded)		3,130 / 10' 3"					3,130 / 10' 3"			
<b>C</b> Cab height		3,150 / 10' 4"					3,150 / 10' 4"			
<b>D</b> Counterweight ground clearance		1,175 / 3'10"					1,175 / 3'10"			
<b>E</b> Rear-end length		3,350 / 11'					3,350 / 11'			
<b>F</b> Tail swing radius		3,450 / 11' 4"					3,450 / 11' 4"			
<b>G</b> Wheelbase		3,990 / 13' 1"					4,300 / 14' 1"			
<b>H</b> Undercarriage length		4,840 / 15'11"					5,150 / 16'11"			
<b>I</b> Undercarriage ground clearance		495 / 1' 7"					495 / 1' 7"			
<b>J</b> Track height		1,055 / 3' 6"					1,055 / 3' 6"			
<b>K</b> Track gauge		2,590 / 8' 6"					2,740 / 9'			
<b>L</b> Track pad width		600 / 24"	700 / 28"	800 / 31"	900 / 35"		600 / 24"	700 / 28"	800 / 31"	900 / 35"
<b>M</b> Width over tracks		3,190 / 10' 6"	3,290 / 10'10"	3,390 / 11' 1"	3,490 / 11' 5"		3,340 / 10'11"	3,440 / 11' 3"	3,540 / 11' 7"	3,640 / 11'11"
<b>N</b> Width over steps		3,190 / 10' 6"	3,190 / 10' 6"	3,390* / 11' 1"*	3,390* / 11' 1"*		3,340 / 10'11"	3,340 / 10'11"	3,540* / 11' 7"*	3,540* / 11' 7"*

\* width with removable steps

\*\* without door stop device and spacer

	Stick length m/ft in	Mono boom 6.45 m/21'2" direct mounting			Mono boom SME 6.15 m/20'2" direct mounting			
		LC	mm/ft in		WLC	LC	mm/ft in	
<b>R</b> Front swing radius	2.60/ 8'6"		4,250/13'11"				-	
	2.90/ 9'6"		4,250/13'11"				-	
	3.25/10'8"		4,250/13'11"				-	
	3.95/13'		4,250/13'11"				-	
	2.15/ 7'1" SME		-				4,050/13'3"	
2.60/ 8'6" SME		-				4,050/13'3"		
<b>S</b> Height with boom up		8,900/29'2"		8,900/29'2"		8,700/28'7"		8,700/28'7"
<b>T</b> Boom height	2.60/ 8'6"	3,550/11'8"		3,550/11'8"		-		-
	2.90/ 9'6"	3,750/12'4"		3,750/12'4"		-		-
	3.25/10'8"	3,800/12'6"		3,800/12'6"		-		-
	3.95/13'	3,350*/11'		3,350*/11'		-		-
	2.15/ 7'1" SME	-		-		3,450/11'4" / 3,300*/10'10"		3,350/11' / 3,300*/10'10"
2.60/ 8'6" SME	-		-		3,650/12' / 3,350*/11'		3,950/13' / 3,350*/11'	
<b>U</b> Length on ground	2.60/ 8'6"	6,800/22'4"		6,950/22'10"		-		-
	2.90/ 9'6"	6,500/21'4"		6,650/21'10"		-		-
	3.25/10'8"	6,050/19'10"		6,200/20'4"		-		-
	3.95/13'	7,800*/25'7"		7,950*/26'1"		-		-
	2.15/ 7'1" SME	-		-		6,900/22'8" / 9,300*/30'6"		7,000/23' / 9,450*/31'
2.60/ 8'6" SME	-		-		6,500/21'4" / 8,900*/29'2"		6,800/22'4" / 9,050*/29'8"	
<b>V</b> Overall length	2.60/ 8'6"		11,200/36'9"				-	
	2.90/ 9'6"		11,200/36'9"				-	
	3.25/10'8"		11,200/36'9"				-	
	3.95/13'		11,000*/36'1"				-	
	2.15/ 7'1" SME		-				10,900/35'9" / 10,800*/35'5"	
2.60/ 8'6" SME		-				10,900/35'9" / 10,800*/35'5"		
Bucket		2.15 m <sup>3</sup> /2.81 yd <sup>3</sup>				2.50 m <sup>3</sup> /3.27 yd <sup>3</sup>		

\* without bucket

## Transport Dimensions removable elements disassembled

	Undercarriage/ Stick m/ft in	Mono boom 6.45 m/21'2"				Mono boom SME 6.15 m/20'2"			
		mm/ft in				mm/ft in			
Pad width		600/ 24"	700/ 28"	800/ 31"	900/ 35"	600/ 24"	700/ 28"	800/ 31"	900/ 35"
Transport width	LC	3,190/10' 6"	3,290/10'10"	3,390/11' 1"	3,490/11' 5"	3,190/10' 6"	3,290/10'10"	3,390/11' 1"	3,490/11' 5"
	WLC	3,340/10'11"	3,440/11' 3"	3,540/11' 7"	3,640/11'11"	3,340/10'11"	3,440/11' 3"	3,540/11' 7"	3,640/11'11"
Transport length	LC	11,200 <sup>1)</sup> /36'9" <sup>1)</sup> / 11,000 <sup>2)</sup> /36'1" <sup>2)</sup>				10,900/35'9" / 10,800*/35'5"			
	WLC	11,200 <sup>1)</sup> /36'9" <sup>1)</sup> / 11,000 <sup>2)</sup> /36'1" <sup>2)</sup>				10,900/35'9" / 10,800*/35'5"			
Transport height	2.60/ 8'6"	3,550/11'8"				-			
	2.90/ 9'6"	3,750/12'4"				-			
	3.25/10'8"	3,800/12'6"				-			
	3.95/13'	3,350*/11'				-			
	2.15/ 7'1" SME	-				3,450 <sup>3)</sup> /11'4" <sup>3)</sup> / 3,300 <sup>3)</sup> /10'10" <sup>3)</sup>			
2.60/ 8'6" SME	-				3,350 <sup>4)</sup> /11'4" / 3,300 <sup>4)</sup> /10'10" <sup>4)</sup>				
Bucket		2.15 m <sup>3</sup> /2.81 yd <sup>3</sup>				2.50 m <sup>3</sup> /3.27 yd <sup>3</sup>			

\* without bucket

<sup>1)</sup> with sticks 2.60 m, 2.90 m and 3.25 m

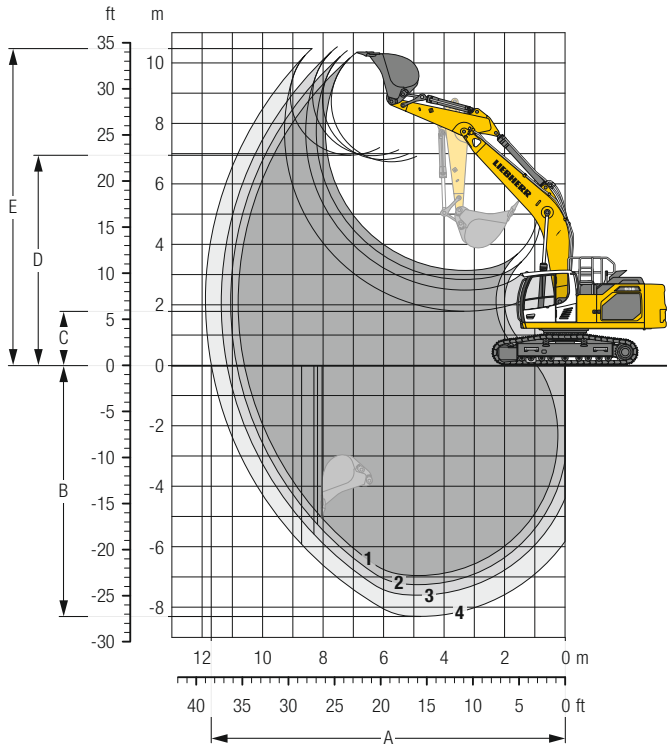
<sup>2)</sup> with stick 3.95 m

<sup>3)</sup> with LC-Undercarriage

<sup>4)</sup> with WLC-Undercarriage

# Backhoe Bucket

with Mono Boom 6.45 m/21'2" and Counterweight 8.4 t/18,520 lb



## Digging Envelope

without quick coupler	1	2	3	4
Stick length	m/ft in 2.60/ 8' 6"	2.90/ 9'6"	3.25/10' 8"	3.95/13'
A Max. reach at ground level	m/ft in 10.60/34' 9"	10.85/35'7"	11.17/36' 8"	11.70/38' 5"
B Max. digging depth	m/ft in 6.95/22'10"	7.25/23'9"	7.60/24'11"	8.30/27' 3"
C Min. dumping height	m/ft in 3.14/10' 4"	2.84/ 9'4"	2.49/ 8' 2"	1.79/ 5'10"
D Max. dumping height	m/ft in 6.73/22' 1"	6.80/22'4"	6.93/22' 9"	6.95/22'10"
E Max. cutting height	m/ft in 10.35/33'11"	10.40/34'1"	10.53/34' 7"	10.47/34' 4"

## Forces

without quick coupler	1	2	3	4
Stick digging force (ISO 6015)	kN/lbf 212/47,660	198/44,510	183/41,140	159/35,750
Bucket digging force (ISO 6015)	kN/lbf 238/53,510	238/53,510	238/53,510	238/53,510
Stick digging force (SAE J1179)	kN/lbf 202/45,410	189/42,490	176/39,570	154/34,620
Bucket digging force (SAE J1179)	kN/lbf 210/47,210	210/47,210	210/47,210	210/47,210

## Operating Weight and Ground Pressure

The operating weight includes the basic machine with counterweight 8.4 t/18,520 lb, mono boom 6.45 m/21'2", stick 3.25 m/10'8" and bucket 2.15 m<sup>3</sup>/2.81 yd<sup>3</sup> (1,730 kg/3,810 lb).

Undercarriage	LC			
Pad width	mm/in 600/24"	700/28"	800/31"	900/35"
Weight	kg/lb 37,200/82,010	37,550/82,780	37,900/83,560	38,250/84,330
Ground pressure	kg/cm <sup>2</sup> /psi 0.72/10.2	0.62/8.8	0.55/7.8	0.49/7.0

Undercarriage	WLC			
Pad width	mm/in 600/24"	700/28"	800/31"	900/35"
Weight	kg/lb 37,750/83,230	38,100/84,000	38,450/84,770	38,850/85,650
Ground pressure	kg/cm <sup>2</sup> /psi 0.68/9.7	0.59/8.4	0.52/7.4	0.47/6.7

Optional: counterweight 9.4 t/20,720 lb

(counterweight 9.4 t/20,720 lb increases the operating weight by 1,000 kg/2,210 lb and ground pressure by 0.02 kg/cm<sup>2</sup>/0.3 psi) see load tables on page 14 and 15

## Buckets Machine stability per ISO 10567\* (75% of tipping capacity)

	Cutting width mm in	Capacity ISO 7451 m³ yd³	Weight <sup>1)</sup> kg lb	Weight <sup>4)</sup> kg lb	LC-Undercarriage (with track pads 800 mm/31")								WLC-Undercarriage (with track pads 800 mm/31")							
					Stick length (m/ft in)				Stick length (m/ft in)				Stick length (m/ft in)				Stick length (m/ft in)			
					without quick coupler		with quick coupler		without quick coupler		with quick coupler		without quick coupler		with quick coupler		without quick coupler		with quick coupler	
2.60 8'6"	2.90 9'6"	3.25 10'8"	3.95 13'	2.60 8'6"	2.90 9'6"	3.25 10'8"	3.95 13'	2.60 8'6"	2.90 9'6"	3.25 10'8"	3.95 13'	2.60 8'6"	2.90 9'6"	3.25 10'8"	3.95 13'					
with counterweight 8.4 t/18,520 lb																				
STD <sup>1)</sup>	1,600	1.90	1,700	1,660	▲	▲	▲	■	▲	▲	▲	▲	▲	▲	▲	▲	▲	■		
	63"	2.48	3,750	3,660	▲	▲	▲	■	▲	▲	▲	▲	▲	▲	▲	▲	▲	■		
	1,650	2.00	1,730	1,690	▲	▲	■	▲	▲	▲	■	■	▲	▲	▲	▲	▲	■		
	65"	2.62	3,810	3,730	▲	▲	■	▲	▲	▲	■	■	▲	▲	▲	▲	▲	■		
	1,600	2.15	1,770	1,730	▲	■	■	■	▲	■	▲	■	▲	▲	▲	▲	■	▲		
	63"	2.81	3,900	3,810	▲	■	■	■	▲	■	▲	■	▲	▲	▲	▲	■	▲		
	1,650	2.25	1,810	1,770	▲	■	▲	■	■	■	▲	▲	▲	▲	▲	■	■	■		
	65"	2.94	3,990	3,900	▲	■	▲	■	■	■	▲	▲	▲	▲	▲	■	■	■		
	1,800	2.50	1,900	1,860	▲	▲	■	△	▲	■	△	△	▲	■	▲	△	■	△		
	71"	3.27	4,190	4,100	▲	▲	■	△	▲	■	△	△	▲	■	▲	△	■	△		
1,800	2.75	1,970	1,930	■	■	△	-	■	△	△	-	▲	■	■	△	▲	△			
71"	3.60	4,340	4,260	■	■	△	-	■	△	△	-	▲	■	■	△	▲	△			
1,850	3.00	2,020	1,980	△	△	△	-	△	△	-	-	■	△	△	-	■	△	-		
73"	3.92	4,450	4,370	△	△	△	-	△	△	-	-	■	△	△	-	■	△	-		
with counterweight 9.4 t/20,720 lb																				
STD <sup>1)</sup>	1,600	1.90	1,700	1,660	▲	▲	▲	▲	▲	▲	▲	■	▲	▲	▲	▲	▲	▲		
	63"	2.48	3,750	3,660	▲	▲	▲	▲	▲	▲	▲	■	▲	▲	▲	▲	▲	▲		
	1,650	2.00	1,730	1,690	▲	▲	▲	■	▲	▲	▲	■	▲	▲	▲	▲	▲	▲		
	65"	2.62	3,810	3,730	▲	▲	▲	■	▲	▲	▲	■	▲	▲	▲	▲	▲	▲		
	1,600	2.15	1,770	1,730	▲	▲	▲	▲	▲	▲	■	▲	▲	▲	▲	▲	▲	■		
	63"	2.81	3,900	3,810	▲	▲	▲	▲	▲	▲	■	▲	▲	▲	▲	▲	▲	▲		
	1,650	2.25	1,810	1,770	▲	▲	■	▲	▲	▲	■	■	▲	▲	▲	▲	▲	▲		
	65"	2.94	3,990	3,900	▲	▲	■	▲	▲	▲	■	■	▲	▲	▲	▲	▲	▲		
	1,800	2.50	1,900	1,860	■	■	▲	△	■	▲	■	△	▲	▲	■	■	■	■		
	71"	3.27	4,190	4,100	■	■	▲	△	■	▲	■	△	▲	▲	■	■	■	■		
1,800	2.75	1,970	1,930	▲	▲	■	△	▲	■	△	△	■	■	▲	△	■	△			
71"	3.60	4,340	4,260	▲	▲	■	△	▲	■	△	△	■	■	▲	▲	■	△			
1,850	3.00	2,020	1,980	■	■	△	△	■	△	△	-	▲	▲	■	△	▲	△			
73"	3.92	4,450	4,370	■	■	△	△	■	△	△	-	▲	▲	■	△	▲	△			
HD <sup>2)</sup>	1,600	1.90	1,800	1,760	▲	▲	▲	▲	▲	▲	▲	■	▲	▲	▲	▲	▲	▲		
	63"	2.48	3,970	3,880	▲	▲	▲	▲	▲	▲	▲	■	▲	▲	▲	▲	▲	▲		
	1,650	2.00	1,830	1,790	▲	▲	▲	■	▲	▲	▲	■	▲	▲	▲	▲	▲	■		
	65"	2.62	4,030	3,950	▲	▲	▲	■	▲	▲	▲	■	▲	▲	▲	▲	▲	■		
	1,600	2.15	1,870	1,830	▲	▲	■	▲	▲	▲	■	▲	▲	▲	▲	▲	▲	■		
	63"	2.81	4,120	4,030	▲	▲	■	▲	▲	▲	■	▲	▲	▲	▲	▲	▲	▲		
	1,650	2.25	1,910	1,870	▲	▲	■	▲	▲	■	■	■	▲	▲	▲	▲	▲	▲		
	65"	2.94	4,210	4,120	▲	▲	■	▲	▲	■	■	■	▲	▲	▲	▲	▲	▲		
	1,800	2.50	2,000	1,960	■	■	▲	△	■	▲	■	△	▲	■	■	■	▲	■		
	71"	3.27	4,410	4,320	■	■	▲	△	■	▲	■	△	▲	■	■	■	▲	■		
1,800	2.75	2,080	2,040	▲	■	■	△	▲	■	△	△	■	▲	■	▲	■	△			
71"	3.60	4,590	4,500	▲	■	■	△	▲	■	△	△	■	▲	■	▲	■	△			
1,850	3.00	2,130	2,090	■	■	△	-	■	△	△	-	▲	■	△	▲	■	△			
73"	3.92	4,700	4,610	■	■	△	-	■	△	△	-	▲	■	△	▲	■	△			

\* Indicated loads are based on ISO 10567, at maximum reach, and may be swung 360° on firm and even ground

<sup>1)</sup> Standard bucket with teeth Z 50

<sup>2)</sup> HD bucket with teeth Z 50

<sup>3)</sup> Bucket for direct mounting

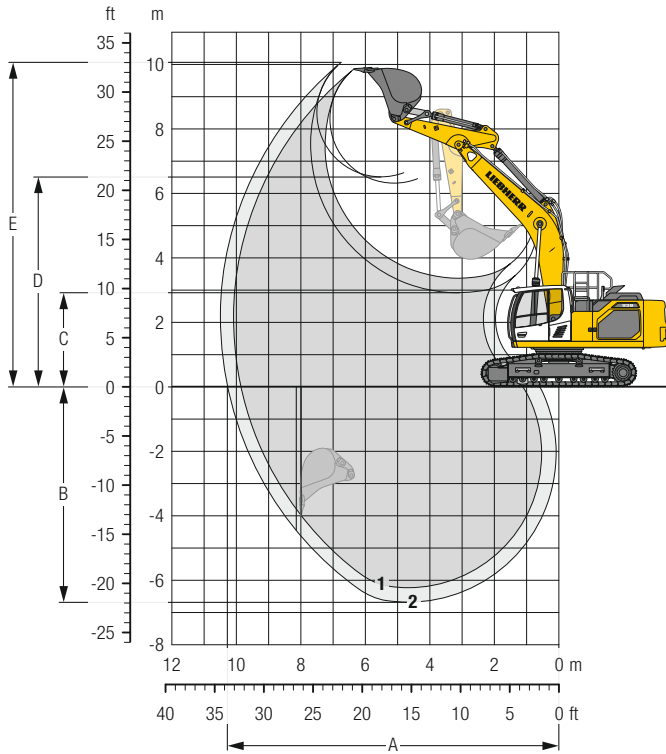
<sup>4)</sup> Bucket for mounting to quick coupler

Other buckets available upon request

Max. material weight ▲ = ≤ 2.0 t/m³/3,400 lb/yd³, ■ = ≤ 1.8 t/m³/3,000 lb/yd³, ▲ = ≤ 1.65 t/m³/2,800 lb/yd³, ■ = ≤ 1.5 t/m³/2,500 lb/yd³, △ = ≤ 1.2 t/m³/2,000 lb/yd³, - = not authorized

# Backhoe Bucket

with Mono Boom SME 6.15 m/20'2" and Counterweight 8.4 t/18,520 lb



## Digging Envelope

without quick coupler		1	2
Stick length	m/ft in	2.15/ 7'1"	2.60/ 8' 6"
		SME	SME
A Max. reach at ground level	m/ft in	9.86/ 32'4"	10.28/ 33' 9"
B Max. digging depth	m/ft in	6.23/ 20'5"	6.68/ 21'11"
C Min. dumping height	m/ft in	3.37/ 11'1"	2.92/ 9' 7"
D Max. dumping height	m/ft in	6.32/ 20'9"	6.61/ 21' 8"
E Max. cutting height	m/ft in	9.86/ 32'4"	10.06/ 33'

## Forces

without quick coupler		1	2
Stick digging force (ISO 6015)	kn/lbf	238/ 53,510	212/ 47,660
Bucket digging force (ISO 6015)	kn/lbf	264/ 59,350	264/ 59,350
Stick digging force (SAE J1179)	kn/lbf	226/ 50,810	202/ 45,410
Bucket digging force (SAE J1179)	kn/lbf	233/ 52,380	233/ 52,380

## Operating Weight and Ground Pressure

The operating weight includes the basic machine with counterweight 8.4 t/18,520 lb, mono boom SME 6.15 m/20'2", stick SME 2.15 m/7'1" and bucket HD 2.50 m<sup>3</sup>/3.27 yd<sup>3</sup> (2,000 kg/4,410 lb).

Undercarriage		LC			
Pad width	mm/in	600/ 24"	700/ 28"	800/ 31"	900/ 35"
Weight	kg/lb	37,400/ 82,450	37,750/ 83,230	38,100/ 84,000	38,450/ 84,770
Ground pressure	kg/cm <sup>2</sup> / psi	0.73/ 10.4	0.63/ 9.0	0.56/ 8.0	0.50/ 7.1

Undercarriage		WLC			
Pad width	mm/in	600/ 24"	700/ 28"	800/ 31"	900/ 35"
Weight	kg/lb	37,950/ 83,670	38,300/ 84,440	38,650/ 85,210	39,050/ 86,090
Ground pressure	kg/cm <sup>2</sup> / psi	0.69/ 9.8	0.60/ 8.5	0.53/ 7.5	0.47/ 6.7

Optional: counterweight 9.4 t/20,720 lb

(counterweight 9.4 t/20,720 lb increases the operating weight by 1,000 kg/2,210 lb and ground pressure by 0.02 kg/cm<sup>2</sup>/0.3 psi) see load tables on page 17

## Buckets Machine stability per ISO 10567\* (75% of tipping capacity)

	Cutting width mm in	Capacity ISO 7451 m <sup>3</sup> yd <sup>3</sup>	Weight <sup>2)</sup> kg lb	Weight <sup>4)</sup> kg lb	LC-Undercarriage (with track pads 800 mm/31")				WLC-Undercarriage (with track pads 800 mm/31")			
					Stick length (m/ft in)				Stick length (m/ft in)			
					without quick coupler		with quick coupler		without quick coupler		with quick coupler	
					2.15 7'1"	2.60 8'6"	2.15 7'1"	2.60 8'6"	2.15 7'1"	2.60 8'6"	2.15 7'1"	2.60 8'6"
<b>with counterweight 8.4 t/18,520 lb</b>												
HD <sup>1)</sup>	1,600	2.15	1,870	1,830	▲	▲	▲	▲	▲	▲	▲	▲
	<b>63"</b>	<b>2.81</b>	<b>4,120</b>	<b>4,030</b>	▲	▲	▲	▲	▲	▲	▲	▲
	1,650	2.25	1,910	1,870	▲	▲	▲	▲	▲	▲	▲	▲
	<b>65"</b>	<b>2.94</b>	<b>4,210</b>	<b>4,120</b>	▲	▲	▲	▲	▲	▲	▲	▲
	1,800	2.50	2,000	1,960	▲	■	▲	▲	▲	■	▲	■
	<b>71"</b>	<b>3.27</b>	<b>4,410</b>	<b>4,320</b>	▲	■	▲	▲	▲	■	▲	■
1,800	2.75	2,080	2,040	■	■	■	■	▲	▲	■	▲	
<b>71"</b>	<b>3.60</b>	<b>4,590</b>	<b>4,500</b>	■	■	■	■	▲	▲	■	▲	
1,850	3.00	2,130	2,090	▲	△	■	△	■	■	▲	■	
<b>73"</b>	<b>3.92</b>	<b>4,700</b>	<b>4,610</b>	▲	△	■	△	■	■	▲	■	
HDR <sup>2)</sup>	1,650	2.00	2,490	2,530	▲	▲	▲	▲	▲	▲	▲	▲
	<b>65"</b>	<b>2.62</b>	<b>5,490</b>	<b>5,580</b>	▲	▲	▲	▲	▲	▲	▲	▲
	1,650	2.25	2,570	2,610	▲	■	▲	▲	▲	■	▲	▲
	<b>65"</b>	<b>2.94</b>	<b>5,670</b>	<b>5,750</b>	▲	■	▲	▲	▲	■	▲	▲
	1,650	2.50	2,660	2,700	■	■	▲	■	▲	■	▲	▲
	<b>65"</b>	<b>3.27</b>	<b>5,860</b>	<b>5,950</b>	■	■	▲	■	▲	■	▲	▲
<b>with counterweight 9.4 t/20,720 lb</b>												
HD <sup>1)</sup>	1,600	2.15	1,870	1,830	▲	▲	▲	▲	▲	▲	▲	▲
	<b>63"</b>	<b>2.81</b>	<b>4,120</b>	<b>4,030</b>	▲	▲	▲	▲	▲	▲	▲	▲
	1,650	2.25	1,910	1,870	▲	▲	▲	▲	▲	▲	▲	▲
	<b>65"</b>	<b>2.94</b>	<b>4,210</b>	<b>4,120</b>	▲	▲	▲	▲	▲	▲	▲	▲
	1,800	2.50	2,000	1,960	▲	▲	▲	■	▲	▲	▲	▲
	<b>71"</b>	<b>3.27</b>	<b>4,410</b>	<b>4,320</b>	▲	▲	▲	■	▲	▲	▲	▲
1,800	2.75	2,080	2,040	▲	■	▲	▲	▲	■	▲	■	
<b>71"</b>	<b>3.60</b>	<b>4,590</b>	<b>4,500</b>	▲	■	▲	▲	▲	■	▲	■	
1,850	3.00	2,130	2,090	■	▲	■	■	▲	■	■	▲	
<b>73"</b>	<b>3.92</b>	<b>4,700</b>	<b>4,610</b>	■	▲	■	■	▲	■	■	▲	
HDR <sup>2)</sup>	1,650	2.00	2,490	2,530	▲	▲	▲	▲	▲	▲	▲	▲
	<b>65"</b>	<b>2.62</b>	<b>5,490</b>	<b>5,580</b>	▲	▲	▲	▲	▲	▲	▲	▲
	1,650	2.25	2,570	2,610	▲	▲	▲	■	▲	▲	▲	■
	<b>65"</b>	<b>2.94</b>	<b>5,670</b>	<b>5,750</b>	▲	▲	▲	■	▲	▲	▲	■
	1,650	2.50	2,660	2,700	▲	■	▲	▲	▲	▲	▲	■
	<b>65"</b>	<b>3.27</b>	<b>5,860</b>	<b>5,950</b>	▲	■	▲	▲	▲	▲	▲	■

\* Indicated loads are based on ISO 10567, at maximum reach, and may be swung 360° on firm and even ground

<sup>1)</sup> HD bucket with teeth Z 50

<sup>2)</sup> HDR bucket with teeth Z 70

<sup>3)</sup> Bucket for direct mounting

<sup>4)</sup> Bucket for mounting to quick coupler

Other buckets available upon request

Max. material weight ▲ = ≤ 2.0 t/m<sup>3</sup>/3,400 lb/yd<sup>3</sup>, ■ = ≤ 1.8 t/m<sup>3</sup>/3,000 lb/yd<sup>3</sup>, ▲ = ≤ 1.65 t/m<sup>3</sup>/2,800 lb/yd<sup>3</sup>, ■ = ≤ 1.5 t/m<sup>3</sup>/2,500 lb/yd<sup>3</sup>, △ = ≤ 1.2 t/m<sup>3</sup>/2,000 lb/yd<sup>3</sup>

# Lift Capacities

with Mono Boom 6.45 m/21'2", Counterweight 8.4 t/18,520 lb and Track Pads 800 mm/31"

## Stick 2.60 m / 8'6"

Under-carriage	Height	3.0 m 10 ft		4.5 m 15 ft		6.0 m 20 ft		7.5 m 25 ft		9.0 m 30 ft		m ft in
		LC	WLC	LC	WLC	LC	WLC	LC	WLC	LC	WLC	
7.5 m t						10.0*	10.0*					8.6 9.9* 6.9
25 ft lb						22.0*	22.0*					19.5 21.8* 22.5"
6.0 m t						10.6*	10.6*	7.5	9.7*			6.8 9.6* 7.9
20 ft lb						23.1*	23.1*	16.2	21.3*			15.4 21.2* 25.8"
4.5 m t			15.2*	15.2*	10.1	11.8*	7.2	10.2*				6.0 8.8 8.5
15 ft lb			32.7*	32.7*	22.0	25.6*	15.8	22.2*				13.4 19.7 27.10"
3.0 m t			14.1	18.4*	9.5	13.3*	6.9	10.4				5.5 8.2 8.8
10 ft lb			30.7	39.6*	20.7	28.7*	15.2	22.6				12.3 18.3 28.10"
1.5 m t			13.3	16.5*	9.0	14.0	6.7	10.1				5.4 8.0 8.8
5 ft lb			29.0	40.4*	19.7	30.5	14.6	22.0				12.0 17.9 28.11"
0 m t			13.1	19.6*	8.8	13.7	6.5	9.9				5.5 8.2 8.6
0 ft lb			28.6	42.6*	19.1	29.9	14.2	21.6				12.3 18.4 28.1"
-1.5 m t	15.0*	15.0*	13.2	18.4*	8.7	13.7	6.5	9.9				6.0 9.0 8.0
-5 ft lb	34.0*	34.0*	28.7	40.0*	19.0	29.7	14.2	21.5				13.3 20.1 26.4"
-3.0 m t	20.1*	20.1*	13.4	16.2*	8.8	12.6*						7.0 10.1* 7.1
-10 ft lb	43.8*	43.8*	29.1	35.0*	19.3	27.2*						15.8 22.3* 23.4"
-4.5 m t			12.2*	12.2*								9.4* 9.4* 5.7
-15 ft lb			25.9*	25.9*								20.6* 20.6* 18.7"
-6.0 m t												
-20 ft lb												

## Stick 2.90 m / 9'6"

Under-carriage	Height	3.0 m 10 ft		4.5 m 15 ft		6.0 m 20 ft		7.5 m 25 ft		9.0 m 30 ft		m ft in
		LC	WLC	LC	WLC	LC	WLC	LC	WLC	LC	WLC	
7.5 m t												8.0 9.3* 7.2
25 ft lb												18.3 20.5* 23.6"
6.0 m t						10.2*	10.2*	7.5	9.3*			6.5 9.1* 8.2
20 ft lb						22.1*	22.1*	16.3	20.4*			14.6 20.0* 26.7"
4.5 m t			14.5*	14.5*	10.2	11.4*	7.3	9.9*				5.7 8.4 8.7
15 ft lb			31.2*	31.2*	22.1	24.7*	15.8	21.5*				12.8 18.8 28.7"
3.0 m t			14.3	17.7*	9.5	12.9*	7.0	10.4	5.3	7.9		5.3 7.8 9.0
10 ft lb			31.1	38.1*	20.8	27.9*	15.2	22.6				11.8 17.5 29.7"
1.5 m t			13.4	19.6*	9.0	14.1	6.7	10.1	5.2	7.7		5.1 7.7 9.0
5 ft lb			29.2	42.4*	19.7	30.5*	14.6	22.0				11.5 17.1 29.8"
0 m t			13.1	19.7*	8.7	13.7	6.5	9.9				5.2 7.9 8.8
0 ft lb			28.5	42.8*	19.0	29.8	14.2	21.5				11.7 17.5 28.11"
-1.5 m t	15.0*	15.0*	13.1	18.7*	8.6	13.6	6.4	9.8				5.7 8.5 8.3
-5 ft lb	34.0*	34.0*	28.4	40.7*	18.8	29.6	14.0	21.4				12.6 19.0 27.2"
-3.0 m t	21.6*	21.6*	13.3	16.7*	8.7	13.0*						6.6 9.9* 7.5
-10 ft lb	47.0*	47.0*	28.8	36.3*	19.0	28.0*						14.8 21.9* 24.4"
-4.5 m t			16.5*	16.5*	13.1*	13.1*	9.1	9.8*				8.8 9.5* 6.1
-15 ft lb			35.4*	35.4*	28.1*	28.1*						20.1 20.9* 19.10"
-6.0 m t												
-20 ft lb												

 Height 
  Can be slewed through 360° 
  In longitudinal position of undercarriage 
  Max. reach 
 \* Limited by hydr. capacity

The load values are quoted in tons (t) / lb x 1,000 at stick end (without bucket), and may be swung 360° on firm and even ground. Adjacent values are valid for the undercarriage when in the longitudinal position. Capacities are valid for 800 mm/31" wide track pads. Indicated loads are based on ISO 10567 standard and do not exceed 75% of tipping or 87% of hydraulic capacity (indicated via \*). Without bucket cylinder, link and lever the lift capacities will increase by 495 kg/1,090 lb. Lifting capacity of the excavator is limited by machine stability and hydraulic capacity.

### Stick 3.25 m / 10'8"

Under-carriage	Height	3.0 m 10 ft		4.5 m 15 ft		6.0 m 20 ft		7.5 m 25 ft		9.0 m 30 ft		Max. reach	m ft in	
		t	lb	t	lb	t	lb	t	lb	t	lb			
LC	7.5 m t							7.6	8.8*			7.4	8.1*	7.6
	25 ft lb							16,8	18,0*	16,8	18,0*	24'10"		
	6.0 m t							7.5	8.9*			6.1	8.0*	8.5
	20 ft lb							16,4	19,4*	13,7	17,6*	27'10"		
	4.5 m t			13.6*	13.6*	10.2	10.9*	7.3	9.5*	5.4	8.0	5.4	7.9	9.1
	15 ft lb			29,2*	29,2*	22,3	23,6*	15,8	20,6*	12,0	17,7	29'8"		
	3.0 m t			14.4	16.9*	9.6	12.4*	6.9	10.2*	5.3	7.8	5.0	7.4	9.3
	10 ft lb			31,5	36,3*	20,9	26,9*	15,1	22,3*	11,5	17,1	11,1	16,5	30'7"
	1.5 m t			13.4	19.1*	9.0	13.7*	6.6	10.0	5.1	7.7	4.8	7.2	9.4
	5 ft lb			29,2	41,3*	19,7	29,7*	14,5	21,9	11,2	16,7	10,8	16,2	30'8"
WLC	0 m t			13.0	19.7*	8.7	13.6	6.4	9.8	5.0	7.6	4.9	7.4	9.1
	0 ft lb			16,7*	16,7*	28,2	42,6*	18,9	29,7	14,0	21,3	11,0	16,5	30'
	-1.5 m t	14.5*	14.5*	12.9	19.0*	8.5	13.5	6.3	9.7	5.3	8.0	8.6		
	-5 ft lb	32,9*	32,9*	28,1	41,2*	18,6	29,3	13,8	21,1	11,8	17,8	28'4"		
	-3.0 m t	22.8*	22.8*	13.0	17.3*	8.6	13.2*	6.4	9.7	6.0	9.2	7.8		
	-10 ft lb	50,2*	50,2*	28,4	37,4*	18,7	28,6*	13,9	21,3	13,6	20,6	25'7"		
	-4.5 m t	18.3*	18.3*	13.4	17.4*	8.8	10.7*			7.8	9.4*	6.6		
	-15 ft lb	39,3*	39,3*	29,2	30,3*	19,3	22,8*			17,8	20,7*	21'4"		
	-6.0 m t													
	-20 ft lb													

### Stick 3.95 m / 13'

Under-carriage	Height	3.0 m 10 ft		4.5 m 15 ft		6.0 m 20 ft		7.5 m 25 ft		9.0 m 30 ft		Max. reach	m ft in	
		t	lb	t	lb	t	lb	t	lb	t	lb			
LC	7.5 m t											7.7*	7.7*	
	25 ft lb											16,9	17,0*	
	6.0 m t											7.6	8.0*	5.6
	20 ft lb											16,6	17,5*	12,3
	4.5 m t											9.8*	9.8*	7.3
	15 ft lb											21,2*	21,2*	16,0
	3.0 m t			14.0*	14.0*	14.9	15.1*	9.7	11.4*	7.0	9.5*	5.3	7.8	4.5
	10 ft lb			35,7*	35,7*	32,5	32,6*	21,2	24,7*	15,2	20,7*	11,4	17,0	10,1
	1.5 m t			7.0*	7.0*	13.6	17.9*	9.1	13.0*	6.6	10.0	5.1	7.6	4.4
	5 ft lb			16,5*	16,5*	29,7	38,7*	19,8	28,0*	14,4	21,8	11,0	16,6	9,8
WLC	0 m t			9.9*	9.9*	12.9	19.3*	8.6	13.6	6.3	9.7	4.9	7.4	4.4
	0 ft lb			22,4*	22,4*	28,1	41,7*	18,8	29,6	13,8	21,2	10,7	16,2	9,9
	-1.5 m t	14.5*	14.5*	12.7	19.2*	8.4	13.3	6.2	9.5	4.8	7.4	4.7	7.1	9.2
	-5 ft lb	32,7*	32,7*	27,5	41,7*	18,2	29,0	13,4	20,8	10,5	16,0	10,4	15,9	30'2"
	-3.0 m t	20.4*	20.4*	12.7	18.1*	8.3	13.3	6.1	9.5	5.3	8.1	8.4		
	-10 ft lb	46,0*	46,0*	27,6	39,2*	18,1	28,9	13,4	20,7	11,8	18,1	27'7"		
	-4.5 m t	21.4*	21.4*	13.0	15.7*	8.5	11.9*			6.5	9.3*	7.3		
	-15 ft lb	46,1*	46,1*	28,2	33,8*	18,5	25,6*			14,7	20,4*	23'10"		
	-6.0 m t			11.2*	11.2*					9.0*	9.0*	5.5		
	-20 ft lb			23,5*	23,5*					19,6*	19,6*	17'8"		

Height   
 Can be slewed through 360°   
 In longitudinal position of undercarriage   
 Max. reach   
 \* Limited by hydr. capacity

The load values are quoted in tons (t) / lb x 1,000 at stick end (without bucket), and may be swung 360° on firm and even ground. Adjacent values are valid for the undercarriage when in the longitudinal position. Capacities are valid for 800 mm / 31" wide track pads. Indicated loads are based on ISO 10567 standard and do not exceed 75% of tipping or 87% of hydraulic capacity (indicated via \*). Without bucket cylinder, link and lever the lift capacities will increase by 495 kg / 1,090 lb. Lifting capacity of the excavator is limited by machine stability and hydraulic capacity.

# Lift Capacities

with Mono Boom 6.45 m/21'2", Counterweight 9.4 t/20,720 lb and Track Pads 800 mm/31"

## Stick 2.60 m / 8'6"

Under-carriage	Height	3.0 m 10 ft		4.5 m 15 ft		6.0 m 20 ft		7.5 m 25 ft		9.0 m 30 ft		m ft in
		LC	WLC	LC	WLC	LC	WLC	LC	WLC	LC	WLC	
7.5 m t						10.0*	10.0*					9.2 9.9* 6.9
25 ft lb						22.0*	22.0*					20.9 21.8* 22.5"
6.0 m t						10.6*	10.6*	8.0	9.7*			7.4 9.6* 7.9
20 ft lb						23.1*	23.1*	17.4	21.3*			16.5 21.2* 25.8"
4.5 m t			15.2*	15.2*	10.8	11.8*	7.8	10.2*				6.4 9.4 8.5
15 ft lb			32.7*	32.7*	23.5	25.6*	16.9	22.2*				14.4 20.9 27.10"
3.0 m t			15.1	18.4*	10.2	13.3*	7.5	10.8*				6.0 8.7 8.8
10 ft lb			33.0	39.6*	22.3	28.7*	16.3	23.5*				13.3 19.5 28.10"
1.5 m t			14.4	16.5*	9.7	14.3*	7.2	10.8				5.8 8.6 8.8
5 ft lb			31.3	40.4*	21.2	31.0*	15.8	23.4				13.0 19.1 28.11"
0 m t			14.2	19.6*	9.5	14.7*	7.1	10.6				6.0 8.8 8.6
0 ft lb			30.9	42.6*	20.7	31.8*	15.4	23.0				13.3 19.6 28.1"
-1.5 m t	15.0*	15.0*	14.2	18.4*	9.4	14.2*	7.0	10.5				6.5 9.6 8.0
-5 ft lb	34.0*	34.0*	30.9	40.0*	20.5	30.7*	15.4	23.0				14.4 21.5 26.4"
-3.0 m t	20.1*	20.1*	14.5	16.2*	9.5	12.6*						7.6 10.1* 7.1
-10 ft lb	43.8*	43.8*	31.4	35.0*	20.8	27.2*						17.1 22.3* 23.4"
-4.5 m t			12.2*	12.2*								9.4* 9.4* 5.7
-15 ft lb			25.9*	25.9*								20.6* 20.6* 18.7"
-6.0 m t												
-20 ft lb												

## Stick 2.90 m / 9'6"

Under-carriage	Height	3.0 m 10 ft		4.5 m 15 ft		6.0 m 20 ft		7.5 m 25 ft		9.0 m 30 ft		m ft in
		LC	WLC	LC	WLC	LC	WLC	LC	WLC	LC	WLC	
7.5 m t												8.6 9.3* 7.2
25 ft lb												19.5 20.5* 23.6"
6.0 m t						10.2*	10.2*	8.0	9.3*			7.0 9.1* 8.2
20 ft lb						22.1*	22.1*	17.5	20.4*			15.7 20.0* 26.7"
4.5 m t			14.5*	14.5*	10.9	11.4*	7.8	9.9*				6.2 8.9 8.7
15 ft lb			31.2*	31.2*	23.7	24.7*	17.0	21.5*				13.8 20.0 28.7"
3.0 m t			15.3	17.7*	10.3	12.9*	7.5	10.6*	5.7	8.4		5.7 8.4 9.0
10 ft lb			33.4	38.1*	22.4	27.9*	16.3	23.0*				12.8 18.7 29.7"
1.5 m t			14.4	19.6*	9.7	14.1*	7.2	10.8	5.6	8.3		5.6 8.2 9.0
5 ft lb			31.4	42.4*	21.3	30.5*	15.7	23.4				12.4 18.3 29.8"
0 m t			14.1	19.7*	9.4	14.6*	7.0	10.5				5.7 8.4 8.8
0 ft lb			30.7	42.8*	20.6	31.6*	15.3	23.0				12.7 18.7 28.11"
-1.5 m t	15.0*	15.0*	14.1	18.7*	9.3	14.3*	7.0	10.5				6.1 9.1 8.3
-5 ft lb	34.0*	34.0*	30.7	40.7*	20.4	30.9*	15.2	22.8				13.7 20.4 27.2"
-3.0 m t	21.6*	21.6*	14.3	16.7*	9.4	13.0*						7.1 9.9* 7.5
-10 ft lb	47.0*	47.0*	31.1	36.3*	20.6	28.0*						16.0 21.9* 24.4"
-4.5 m t			16.5*	16.5*	13.1*	13.1*	9.8	9.8*				9.5 9.5* 6.1
-15 ft lb			35.4*	35.4*	28.1*	28.1*						20.9* 20.9* 19.10"
-6.0 m t												
-20 ft lb												

Height 
 Can be slewed through 360° 
 In longitudinal position of undercarriage 
 Max. reach 
 \* Limited by hydr. capacity

The load values are quoted in tons (t) / lb x 1,000 at stick end (without bucket), and may be swung 360° on firm and even ground. Adjacent values are valid for the undercarriage when in the longitudinal position. Capacities are valid for 800 mm/31" wide track pads. Indicated loads are based on ISO 10567 standard and do not exceed 75% of tipping or 87% of hydraulic capacity (indicated via \*). Without bucket cylinder, link and lever the lift capacities will increase by 495 kg/1,090 lb. Lifting capacity of the excavator is limited by machine stability and hydraulic capacity.

### Stick 3.25 m / 10'8"

Under-carriage	Height	3.0 m 10 ft		4.5 m 15 ft		6.0 m 20 ft		7.5 m 25 ft		9.0 m 30 ft		Max. reach			
		t	lb	t	lb	t	lb	t	lb	t	lb				
LC	7.5 m t							8.2	8.8*			7.9	8.1*	7.6	
	25 ft lb											18,0	18,0*	24'10"	
	6.0 m t							8.1	8.9*			6.5	8.0*	8.5	
	20 ft lb							17,5	19,4*			14,7	17,6*	27'10"	
	4.5 m t			13.6*	13.6*	10.9*	10.9*	7.8	9.5*	5.9	8.5	5.8	8.1*	9.1	
	15 ft lb			29,2*	29,2*	23,6*	23,6*	17,0	20,6*			13,0	17,8*	29'8"	
	3.0 m t			15.5	16.9*	10.3	12.4*	7.5	10.2*	5.7	8.4	5.4	7.9	9.3	
	10 ft lb			33,8	36,3*	22,4	26,9*	16,3	22,3*	12,4	18,2	12,0	17,7	30'7"	
	1.5 m t			14.5	19.1*	9.7	13.7*	7.2	10.7	5.6	8.2	5.3	7.8	9.4	
	5 ft lb			31,5	41,3*	21,2	29,7*	15,6	23,3	12,1	17,9	11,7	17,3	30'8"	
WLC	0 m t			14.0	19.7*	9.4	14.4*	7.0	10.5	5.5	8.1	5.3	7.9	9.1	
	0 ft lb			16,7*	16,7*	30,5	42,6*	20,4	31,2*	15,2	22,8	11,9	17,7	30'	
	-1.5 m t	14.5*	14.5*	14.0	19.0*	9.2	14.3*	6.9	10.4			5.7	8.5	8.6	
	-5 ft lb	32,9*	32,9*	30,3	41,2*	20,1	30,9*	15,0	22,6			12,8	19,0	28'4"	
	-3.0 m t	22.8*	22.8*	14.1	17.3*	9.3	13.2*	6.9	10.2*			6.6	9.6*	7.8	
	-10 ft lb	50,2*	50,2*	30,7	37,4*	20,2	28,6*	15,1	21,9*			14,7	21,1*	25'7"	
	-4.5 m t	18.3*	18.3*	14.1*	14.1*	9.5	10.7*					8.5	9.4*	6.6	
	-15 ft lb	39,3*	39,3*	30,3*	30,3*	20,9	22,8*					19,2	20,7*	21'4"	
	-6.0 m t														
	-20 ft lb														

### Stick 3.95 m / 13'

Under-carriage	Height	3.0 m 10 ft		4.5 m 15 ft		6.0 m 20 ft		7.5 m 25 ft		9.0 m 30 ft		Max. reach		
		t	lb	t	lb	t	lb	t	lb	t	lb			
LC	7.5 m t											7.7*	7.7*	
	25 ft lb											17,0*	17,0*	
	6.0 m t							8.0*	8.0*	6.0	6.7*	5.9	6.3*	9.1
	20 ft lb							17,5*	17,5*			13,3	13,9*	29'8"
	4.5 m t							9.8*	9.8*	5.9	8.0*	5.3	6.4*	9.6
	15 ft lb							21,2*	21,2*	17,1	18,9*	12,8	17,5*	31'5"
	3.0 m t	14.0*	14.0*	15.1*	15.1*	10.4	11.4*	7.5	9.5*	5.7	8.4	4.9	6.8*	9.9
	10 ft lb	35,7*	35,7*	32,6*	32,6*	22,7	24,7*	16,3	20,7*	12,4	18,2	11,0	14,9*	32'4"
	1.5 m t	7.0*	7.0*	14.7	17.9*	9.8	13.0*	7.1	10.4*	5.5	8.1	4.8	7.1	9.9
	5 ft lb	16,5*	16,5*	32,0	38,7*	21,3	28,0*	15,6	22,6*	11,9	17,7	10,6	15,8	32'5"
WLC	0 m t	9.9*	9.9*	14.0	19.3*	9.3	13.9*	6.9	10.4	5.3	8.0	4.8	7.2	9.7
	0 ft lb	22,4*	22,4*	30,4	41,7*	20,3	30,2*	15,0	22,6	11,6	17,4	10,7	16,0	31'8"
	-1.5 m t	14.5*	14.5*	13.7	19.2*	9.1	14.2*	6.7	10.2	5.2	7.9	5.1	7.6	9.2
	-5 ft lb	32,7*	32,7*	29,8	41,7*	19,8	30,8*	14,6	22,2	11,5	17,2	11,4	17,1	30'2"
	-3.0 m t	20.4*	20.4*	13.7	18.1*	9.0	13.6*	6.7	10.2			5.7	8.6	8.4
	-10 ft lb	46,0*	46,0*	29,9	39,2*	19,7	29,5*	14,6	22,2			12,8	19,3	27'7"
	-4.5 m t	21.4*	21.4*	14.0	15.7*	9.2	11.9*					7.1	9.3*	7.3
	-15 ft lb	46,1*	46,1*	30,5	33,8*	20,1	25,6*					16,0	20,4*	23'10"
	-6.0 m t											9.0*	9.0*	5.5
	-20 ft lb			23,5*	23,5*							19,6*	19,6*	17'8"

 Height  
  Can be slewed through 360°  
  In longitudinal position of undercarriage  
  Max. reach  
 \* Limited by hydr. capacity

The load values are quoted in tons (t) / lb x 1,000 at stick end (without bucket), and may be swung 360° on firm and even ground. Adjacent values are valid for the undercarriage when in the longitudinal position. Capacities are valid for 800 mm / 31" wide track pads. Indicated loads are based on ISO 10567 standard and do not exceed 75% of tipping or 87% of hydraulic capacity (indicated via \*). Without bucket cylinder, link and lever the lift capacities will increase by 495 kg / 1,090 lb. Lifting capacity of the excavator is limited by machine stability and hydraulic capacity.

# Lift Capacities

with Mono Boom SME 6.15 m/20'2", Counterweight 8.4 t/18,520 lb and Track Pads 800 mm/31"

## Stick SME 2.15 m / 7'1"

Under-carriage	Height	3.0 m 10 ft		4.5 m 15 ft		6.0 m 20 ft		7.5 m 25 ft		9.0 m 30 ft		m ft in		
		Can be slewed through 360°	In longitudinal position of undercarriage	Can be slewed through 360°	In longitudinal position of undercarriage	Can be slewed through 360°	In longitudinal position of undercarriage	Can be slewed through 360°	In longitudinal position of undercarriage	Can be slewed through 360°	In longitudinal position of undercarriage			
LC	7.5 m t											10.7	11.3*	6.0
	25 ft lb											24.5	25.0*	19'4"
	6.0 m t					10.4	11.4*					8.0	10.8*	7.1
	20 ft lb					22.7	24.9*					18.1	23.8*	23'
	4.5 m t			15.3	16.0*	10.0	12.4*		7.1	10.6		6.8	10.1	7.7
	15 ft lb			33.3	34.3*	21.7	26.9*	15.5	23.0			15.2	22.6	25'4"
	3.0 m t			13.9	18.9*	9.4	13.7*	6.9	10.3			6.2	9.3	8.0
	10 ft lb			30.5	40.6*	20.5	29.6*	15.0	22.5			13.9	20.7	26'5"
	1.5 m t			13.3	19.1*	9.0	14.0	6.7	10.1			6.0	9.1	8.1
	5 ft lb			29.0	43.2*	19.6	30.5	14.6	21.9			13.5	20.2	26'6"
WLC	0 m t			13.2	19.3*	8.8	13.8	6.6	9.9			6.2	9.4	7.8
	0 ft lb			28.7	42.0*	19.1	30.0	14.3	21.7			13.9	21.0	25'7"
	-1.5 m t	19.0*	19.0*	13.3	17.7*	8.8	13.7*					6.9	10.5	7.2
	-5 ft lb	43.4*	43.4*	28.9	38.5*	19.2	29.7*					15.4	23.5	23'8"
	-3.0 m t	17.6*	17.6*	13.6	14.8*	9.0	11.3*					8.6	10.7*	6.2
	-10 ft lb	38.4*	38.4*	29.6	31.9*	19.7	24.0*					19.4	23.4*	20'4"
	-4.5 m t													
	-15 ft lb													
	7.5 m t											11.3*	11.3*	6.0
	25 ft lb											25.0*	25.0*	19'4"
6.0 m t					11.1	11.4*					8.5	10.8*	7.1	
20 ft lb					24.2	24.9*					19.3	23.8*	23'	
4.5 m t			16.0*	16.0*	10.7	12.4*	7.6	10.8*			7.3	10.6*	7.7	
15 ft lb			34.3*	34.3*	23.2	26.9*	16.6	23.5*			16.3	23.4*	25'4"	
3.0 m t			15.1	18.9*	10.1	13.7*	7.4	11.2*			6.6	10.3	8.0	
10 ft lb			32.9	40.6*	22.0	29.6*	16.1	24.4*			14.8	23.0	26'5"	
1.5 m t			14.4	19.1*	9.7	14.5*	7.1	11.2			6.5	10.1	8.1	
5 ft lb			31.4	43.2*	21.1	31.5*	15.6	24.5			14.4	22.5	26'6"	
0 m t			14.3	19.3*	9.4	14.6*	7.0	11.1			6.7	10.5	7.8	
0 ft lb			31.1	42.0*	20.6	31.7*	15.4	24.2			14.9	23.4	25'7"	
-1.5 m t	19.0*	19.0*	14.4	17.7*	9.4	13.7*					7.4	11.0*	7.2	
-5 ft lb	43.4*	43.4*	31.3	38.5*	20.6	29.7*					16.6	24.2*	23'8"	
-3.0 m t	17.6*	17.6*	14.7	14.8*	9.7	11.3*					9.2	10.7*	6.2	
-10 ft lb	38.4*	38.4*	31.9*	31.9*	21.2	24.0*					20.8	23.4*	20'4"	
-4.5 m t														
-15 ft lb														

## Stick SME 2.60 m / 8'6"

Under-carriage	Height	3.0 m 10 ft		4.5 m 15 ft		6.0 m 20 ft		7.5 m 25 ft		9.0 m 30 ft		m ft in		
		Can be slewed through 360°	In longitudinal position of undercarriage	Can be slewed through 360°	In longitudinal position of undercarriage	Can be slewed through 360°	In longitudinal position of undercarriage	Can be slewed through 360°	In longitudinal position of undercarriage	Can be slewed through 360°	In longitudinal position of undercarriage			
LC	7.5 m t					10.3*	10.3*					9.3	10.3*	6.5
	25 ft lb					22.8*	22.8*					21.3	22.8*	21'1"
	6.0 m t					10.6	10.7*	7.3	10.0*			7.3	10.0*	7.5
	20 ft lb					22.9	23.3*					16.4	22.0*	24'7"
	4.5 m t			14.9*	14.9*	10.1	11.8*	7.2	10.3*			6.3	9.3	8.2
	15 ft lb			49.8*	49.8*	32.1*	32.1*	21.9	25.6*	15.6	22.4*	14.0	20.7	26'8"
	3.0 m t			14.2	18.0*	9.5	13.2*	6.9	10.3			5.8	8.6	8.5
	10 ft lb			31.1	38.7*	20.7	28.5*	15.0	22.5			12.8	19.1	27'8"
	1.5 m t			13.4	19.7*	9.0	14.0	6.6	10.0			5.6	8.4	8.5
	5 ft lb			29.2	42.6*	19.6	30.6	14.5	21.9			12.5	18.7	27'10"
WLC	0 m t			13.1	19.7*	8.7	13.7	6.5	9.9			5.7	8.6	8.2
	0 ft lb			28.5	42.7*	19.0	29.9	14.1	21.5			12.8	19.3	27'
	-1.5 m t	18.0*	18.0*	13.1	18.4*	8.7	13.7	6.5	9.8			6.3	9.5	7.7
	-5 ft lb	40.8*	40.8*	28.6	39.9*	18.9	29.7	14.1	21.5			14.0	21.3	25'2"
	-3.0 m t	20.2*	20.2*	13.4	15.9*	8.8	12.2*					7.6	10.3*	6.8
	-10 ft lb	43.8*	43.8*	29.1	34.4*	19.3	26.1*					17.0	22.8*	22'
	-4.5 m t			11.1*	11.1*							9.3*	9.3*	5.2
	-15 ft lb			23.4*	23.4*							20.3*	20.3*	16'11"
	7.5 m t					10.3*	10.3*					9.9	10.3*	6.5
	25 ft lb					22.8*	22.8*					22.7	22.8*	21'1"
6.0 m t					10.7*	10.7*	7.8	10.0*			7.7	10.0*	7.5	
20 ft lb					23.3*	23.3*					17.5	22.0*	24'7"	
4.5 m t			14.9*	14.9*	10.8	11.8*	7.6	10.3*			6.7	9.9*	8.2	
15 ft lb			49.8*	49.8*	32.1*	32.1*	23.4	25.6*	16.6	22.4*	15.0	21.8*	26'8"	
3.0 m t			15.4	18.0*	10.2	13.2*	7.4	10.9*			6.2	9.5	8.5	
10 ft lb			33.6	38.7*	22.2	28.5*	16.1	23.6*			13.7	21.2	27'8"	
1.5 m t			14.5	19.7*	9.7	14.2*	7.1	11.2			6.0	9.3	8.5	
5 ft lb			31.6	42.6*	21.1	30.8*	15.5	24.4			13.3	20.8	27'10"	
0 m t			14.2	19.7*	9.4	14.6*	6.9	11.0			6.1	9.6	8.2	
0 ft lb			30.9	42.7*	20.5	31.6*	15.2	24.0			13.7	21.5	27'	
-1.5 m t	18.0*	18.0*	14.2	18.4*	9.3	14.0*	6.9	10.8*			6.7	10.4*	7.7	
-5 ft lb	40.8*	40.8*	31.0	39.9*	20.4	30.4*	15.2	23.3*			15.0	23.0*	25'2"	
-3.0 m t	20.2*	20.2*	14.5	15.9*	9.5	12.2*					8.1	10.3*	6.8	
-10 ft lb	43.8*	43.8*	31.5	34.4*	20.7	26.1*					18.3	22.8*	22'	
-4.5 m t			11.1*	11.1*							9.3*	9.3*	5.2	
-15 ft lb			23.4*	23.4*							20.3*	20.3*	16'11"	

 Height 
  Can be slewed through 360° 
  In longitudinal position of undercarriage 
  Max. reach 
 \* Limited by hydr. capacity

The load values are quoted in tons (t)/lb x 1,000 at stick end (without bucket), and may be swung 360° on firm and even ground. Adjacent values are valid for the undercarriage when in the longitudinal position. Capacities are valid for 800 mm/31" wide track pads. Indicated loads are based on ISO 10567 standard and do not exceed 75% of tipping or 87% of hydraulic capacity (indicated via \*). Without bucket cylinder, link and lever the lift capacities will increase by 590 kg/1,300 lb. Lifting capacity of the excavator is limited by machine stability and hydraulic capacity.

# Lift Capacities

with Mono Boom SME 6.15 m/20'2", Counterweight 9.4 t/20,720 lb and Track Pads 800 mm/31"

## Stick SME 2.15 m / 7'1"

Under-carriage	Height	3.0 m 10 ft		4.5 m 15 ft		6.0 m 20 ft		7.5 m 25 ft		9.0 m 30 ft		m ft in		
		LC	WLC	LC	WLC	LC	WLC	LC	WLC	LC	WLC			
LC	7.5 m t											11.3*	11.3*	6.0
	25 ft lb											<b>25.0*</b>	<b>25.0*</b>	<b>19'4"</b>
	6.0 m t					11.2	11.4*					8.6	10.8*	7.1
	20 ft lb					<b>24.3</b>	<b>24.9*</b>					<b>19.3</b>	<b>23.8*</b>	<b>23'</b>
	4.5 m t			16.0*	16.0*	10.7	12.4*		7.7	10.8*		7.3	10.6*	7.7
	15 ft lb			<b>34.3*</b>	<b>34.3*</b>	<b>23.3</b>	<b>26.9*</b>	<b>16.7</b>	<b>23.5*</b>			<b>16.4</b>	<b>23.4*</b>	<b>25'4"</b>
	3.0 m t			15.0	18.9*	10.1	13.7*	7.4	11.0			6.7	9.9	8.0
	10 ft lb			<b>32.7</b>	<b>40.6*</b>	<b>22.1</b>	<b>29.6*</b>	<b>16.2</b>	<b>23.9</b>			<b>15.0</b>	<b>22.0</b>	<b>26'5"</b>
	1.5 m t			14.4	19.1*	9.7	14.5*	7.2	10.7			6.5	9.7	8.1
	5 ft lb			<b>31.3</b>	<b>43.2*</b>	<b>21.2</b>	<b>31.5*</b>	<b>15.7</b>	<b>23.4</b>			<b>14.5</b>	<b>21.5</b>	<b>26'6"</b>
	0 m t			14.2	19.3*	9.5	14.6*	7.1	10.6			6.7	10.0	7.8
	0 ft lb			<b>30.9</b>	<b>42.0*</b>	<b>20.7</b>	<b>31.7*</b>	<b>15.5</b>	<b>23.2</b>			<b>15.0</b>	<b>22.4</b>	<b>25'7"</b>
	-1.5 m t	19.0*	19.0*	14.3	17.7*	9.5	13.7*					7.5	11.0*	7.2
	-5 ft lb	<b>43.4*</b>	<b>43.4*</b>	<b>31.2</b>	<b>38.5*</b>	<b>20.7</b>	<b>29.7*</b>					<b>16.7</b>	<b>24.2*</b>	<b>23'8"</b>
	-3.0 m t	17.6*	17.6*	14.6	14.8*	9.7	11.3*					9.3	10.7*	6.2
-10 ft lb	<b>38.4*</b>	<b>38.4*</b>	<b>31.9</b>	<b>31.9*</b>	<b>21.3</b>	<b>24.0*</b>					<b>20.9</b>	<b>23.4*</b>	<b>20'4"</b>	
-4.5 m t														
-15 ft lb														
WLC	7.5 m t											11.3*	11.3*	6.0
	25 ft lb											<b>25.0*</b>	<b>25.0*</b>	<b>19'4"</b>
	6.0 m t					11.4*	11.4*					9.1	10.8*	7.1
	20 ft lb					<b>24.9*</b>	<b>24.9*</b>					<b>20.6</b>	<b>23.8*</b>	<b>23'</b>
	4.5 m t			16.0*	16.0*	11.4	12.4*	8.2	10.8*			7.8	10.6*	7.7
	15 ft lb			<b>34.3*</b>	<b>34.3*</b>	<b>24.8</b>	<b>26.9*</b>	<b>17.7</b>	<b>23.5*</b>			<b>17.4</b>	<b>23.4*</b>	<b>25'4"</b>
	3.0 m t			16.2	18.9*	10.8	13.7*	7.9	11.2*			7.2	10.7*	8.0
	10 ft lb			<b>35.3</b>	<b>40.6*</b>	<b>23.6</b>	<b>29.6*</b>	<b>17.3</b>	<b>24.4*</b>			<b>16.0</b>	<b>23.5*</b>	<b>26'5"</b>
	1.5 m t			15.5	19.1*	10.4	14.5*	7.7	11.6*			7.0	10.7	8.1
	5 ft lb			<b>33.8</b>	<b>43.2*</b>	<b>22.7</b>	<b>31.5*</b>	<b>16.8</b>	<b>25.2*</b>			<b>15.5</b>	<b>23.8*</b>	<b>26'6"</b>
	0 m t			15.4	19.3*	10.2	14.6*	7.6	11.5*			7.2	10.9*	7.8
	0 ft lb			<b>33.4</b>	<b>42.0*</b>	<b>22.2</b>	<b>31.7*</b>	<b>16.6</b>	<b>24.9*</b>			<b>16.0</b>	<b>24.1*</b>	<b>25'7"</b>
	-1.5 m t	19.0*	19.0*	15.5	17.7*	10.2	13.7*					8.0	11.0*	7.2
	-5 ft lb	<b>43.4*</b>	<b>43.4*</b>	<b>33.7</b>	<b>38.5*</b>	<b>22.2</b>	<b>29.7*</b>					<b>17.8</b>	<b>24.2*</b>	<b>23'8"</b>
	-3.0 m t	17.6*	17.6*	14.8*	14.8*	10.4	11.3*					9.9	10.7*	6.2
-10 ft lb	<b>38.4*</b>	<b>38.4*</b>	<b>31.9*</b>	<b>31.9*</b>	<b>22.8</b>	<b>24.0*</b>					<b>22.4</b>	<b>23.4*</b>	<b>20'4"</b>	
-4.5 m t														
-15 ft lb														

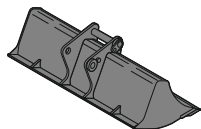
## Stick SME 2.60 m / 8'6"

Under-carriage	Height	3.0 m 10 ft		4.5 m 15 ft		6.0 m 20 ft		7.5 m 25 ft		9.0 m 30 ft		m ft in		
		LC	WLC	LC	WLC	LC	WLC	LC	WLC	LC	WLC			
LC	7.5 m t											10.3*	10.3*	6.5
	25 ft lb											<b>22.8*</b>	<b>22.8*</b>	<b>21'1"</b>
	6.0 m t					10.7*	10.7*	7.9	10.0*			7.8	10.0*	7.5
	20 ft lb					<b>23.3*</b>	<b>23.3*</b>					<b>17.6</b>	<b>22.0*</b>	<b>24'7"</b>
	4.5 m t			14.9*	14.9*	10.8	11.8*	7.7	10.3*			6.7	9.9	8.2
	15 ft lb			<b>49.8*</b>	<b>49.8*</b>	<b>32.1*</b>	<b>32.1*</b>	<b>23.5</b>	<b>25.6*</b>	<b>16.7</b>	<b>22.4*</b>	<b>15.1</b>	<b>21.8*</b>	<b>26'8"</b>
	3.0 m t			15.3	18.0*	10.2	13.2*	7.4	10.9*			6.2	9.1	8.5
	10 ft lb			<b>33.4</b>	<b>38.7*</b>	<b>22.2</b>	<b>28.5*</b>	<b>16.2</b>	<b>23.6*</b>			<b>13.9</b>	<b>20.4</b>	<b>27'8"</b>
	1.5 m t			14.5	19.7*	9.7	14.2*	7.2	10.7			6.0	9.0	8.5
	5 ft lb			<b>31.5</b>	<b>42.6*</b>	<b>21.2</b>	<b>30.8*</b>	<b>15.6</b>	<b>23.3</b>			<b>13.5</b>	<b>20.0</b>	<b>27'10"</b>
	0 m t			14.2	19.7*	9.4	14.6*	7.0	10.5			6.2	9.2	8.2
	0 ft lb			<b>30.8</b>	<b>42.7*</b>	<b>20.6</b>	<b>31.6*</b>	<b>15.3</b>	<b>23.0</b>			<b>13.8</b>	<b>20.6</b>	<b>27'</b>
	-1.5 m t	18.0*	18.0*	14.2	18.4*	9.4	14.0*	7.0	10.5			6.8	10.2	7.7
	-5 ft lb	<b>40.8*</b>	<b>40.8*</b>	<b>30.9</b>	<b>39.9*</b>	<b>20.5</b>	<b>30.4*</b>	<b>15.3</b>	<b>23.0</b>			<b>15.2</b>	<b>22.7</b>	<b>25'2"</b>
	-3.0 m t	20.2*	20.2*	14.4	15.9*	9.5	12.2*					8.2	10.3*	6.8
-10 ft lb	<b>43.8*</b>	<b>43.8*</b>	<b>31.4</b>	<b>34.4*</b>	<b>20.8</b>	<b>26.1*</b>					<b>18.4</b>	<b>22.8*</b>	<b>22'</b>	
-4.5 m t			11.1*	11.1*							9.3*	9.3*	5.2	
-15 ft lb			<b>23.4*</b>	<b>23.4*</b>							<b>20.3*</b>	<b>20.3*</b>	<b>16'11"</b>	
WLC	7.5 m t											10.3*	10.3*	6.5
	25 ft lb											<b>22.8*</b>	<b>22.8*</b>	<b>21'1"</b>
	6.0 m t					10.7*	10.7*	8.4	10.0*			8.3	10.0*	7.5
	20 ft lb					<b>23.3*</b>	<b>23.3*</b>					<b>18.7</b>	<b>22.0*</b>	<b>24'7"</b>
	4.5 m t			14.9*	14.9*	11.5	11.8*	8.2	10.3*			7.2	9.9*	8.2
	15 ft lb			<b>49.8*</b>	<b>49.8*</b>	<b>32.1*</b>	<b>32.1*</b>	<b>25.0</b>	<b>25.6*</b>	<b>17.8</b>	<b>22.4*</b>	<b>16.1</b>	<b>21.8*</b>	<b>26'8"</b>
	3.0 m t			16.5	18.0*	10.9	13.2*	7.9	10.9*			6.6	10.0*	8.5
	10 ft lb			<b>35.9</b>	<b>38.7*</b>	<b>23.8</b>	<b>28.5*</b>	<b>17.3</b>	<b>23.6*</b>			<b>14.8</b>	<b>22.0*</b>	<b>27'8"</b>
	1.5 m t			15.6	19.7*	10.4	14.2*	7.7	11.4*			6.5	9.9	8.5
	5 ft lb			<b>34.0</b>	<b>42.6*</b>	<b>22.7</b>	<b>30.8*</b>	<b>16.7</b>	<b>24.7*</b>			<b>14.4</b>	<b>22.1</b>	<b>27'10"</b>
	0 m t			15.3	19.7*	10.1	14.6*	7.5	11.5*			6.6	10.3	8.2
	0 ft lb			<b>33.3</b>	<b>42.7*</b>	<b>22.1</b>	<b>31.6*</b>	<b>16.4</b>	<b>24.9*</b>			<b>14.8</b>	<b>22.7*</b>	<b>27'</b>
	-1.5 m t	18.0*	18.0*	15.3	18.4*	10.1	14.0*	7.5	10.8*			7.3	10.4*	7.7
	-5 ft lb	<b>40.8*</b>	<b>40.8*</b>	<b>33.4</b>	<b>39.9*</b>	<b>22.0</b>	<b>30.4*</b>	<b>16.4</b>	<b>23.3*</b>			<b>16.2</b>	<b>23.0*</b>	<b>25'2"</b>
	-3.0 m t	20.2*	20.2*	15.6	15.9*	10.2	12.2*					8.8	10.3*	6.8
-10 ft lb	<b>43.8*</b>	<b>43.8*</b>	<b>33.9</b>	<b>34.4*</b>	<b>22.3</b>	<b>26.1*</b>					<b>19.7</b>	<b>22.8*</b>	<b>22'</b>	
-4.5 m t			11.1*	11.1*							9.3*	9.3*	5.2	
-15 ft lb			<b>23.4*</b>	<b>23.4*</b>							<b>20.3*</b>	<b>20.3*</b>	<b>16'11"</b>	

 Height 
  Can be swayed through 360° 
  In longitudinal position of undercarriage 
  Max. reach 
 \* Limited by hydr. capacity

The load values are quoted in tons (t) / lb x 1,000 at stick end (without bucket), and may be swung 360° on firm and even ground. Adjacent values are valid for the undercarriage when in the longitudinal position. Capacities are valid for 800 mm/31" wide track pads. Indicated loads are based on ISO 10567 standard and do not exceed 75% of tipping or 87% of hydraulic capacity (indicated via \*). Without bucket cylinder, link and lever the lift capacities will increase by 590 kg / 1,300 lb. Lifting capacity of the excavator is limited by machine stability and hydraulic capacity.

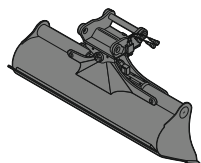
# Available Attachments



## Rigid Ditch Cleaning Bucket

GRL 100, for mounting to quick coupler SWA 66

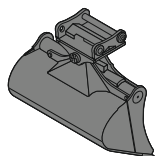
Cutting width	mm/in	2,000/79"	2,200/87"	2,400/95"	2,800/110"	2,800/110"
Capacity	m <sup>3</sup> /yd <sup>3</sup>	1.45/1.90	1.65/2.16	1.50/1.96	2.60/3.40	2.90/3.79
Weight	kg/lb	994/2,190	1,048/2,310	930/2,050	1,522/3,360	1,561/3,440



## Tilttable Ditch Cleaning Bucket

GRL 100, 2 x 50° tilttable, for mounting to quick coupler SWA 66

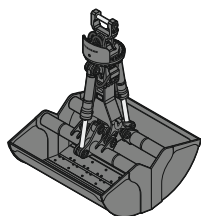
Cutting width	mm/in	2,000/79"	2,000/79"	2,000/79"	2,200/87"	2,400/95"	2,400/95"
Capacity	m <sup>3</sup> /yd <sup>3</sup>	0.70/0.92	1.20/1.57	1.45/1.90	1.65/2.16	0.85/1.11	1.45/1.90
Weight	kg/lb	1,375/3,030	1,520/3,350	1,595/3,520	1,660/3,660	1,475/3,250	1,610/3,550



## Tilt Bucket

SL 100, 2 x 50° tilttable, for mounting to quick coupler SWA 66

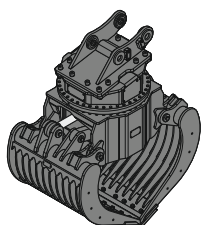
Cutting width	mm/in	1,600/63"	1,600/63"	1,700/67"	1,800/71"	1,800/71"	1,800/71"	1,800/71"
Capacity	m <sup>3</sup> /yd <sup>3</sup>	1.45/1.90	1.75/2.29	1.85/2.42	1.60/2.09	2.00/2.62	1.60/2.09	2.00/2.62
Weight	kg/lb	1,520/3,350	1,635/3,610	1,695/3,740	1,620/3,570	1,690/3,730	1,749/3,860	1,757/3,870
HD-version							X	X



## Clamshells

GMZ 80, earthmoving shell, for mounting to quick coupler SWA 66

Cutting width	mm/in	1,200/47"	1,400/55"	1,650/65"	2,000/79"
Capacity	m <sup>3</sup> /yd <sup>3</sup>	1.40/1.83	1.70/2.22	2.00/2.62	2.50/3.27
Weight	kg/lb	1,452/3,200	1,558/3,440	1,693/3,730	1,877/4,140



## Sorting Grab

SG 40, for mounting to quick coupler SWA 66

		ribbed		perforated	
Cutting width	mm/in	1,100/43"	1,300/51"	1,100/43"	1,300/51"
Capacity	m <sup>3</sup> /yd <sup>3</sup>	1.10/1.44	1.40/1.83	1.30/1.70	1.60/2.09
Weight	kg/lb	2,320/5,120	2,895/6,380	2,230/4,920	2,800/6,170

# Serial Equipment

## Undercarriage

- Lashing eyes
- Sprocket with dirt ejector
- Track and carrier rollers, sealed and lifetime-lubricated

## Uppercarriage

- Access platforms without protruding parts
- Anti-skid surfaces
- Automatic swing brake lock
- DEF tank filling indicator
- DEF tank lockable access hatch
- Engine coolant level, visible from the cab
- Engine hood with gas spring opening
- Filters accessible from ground level
- Handrails
- Hydraulic oil level, visible from ground level
- Lockable fuel tank cap
- Lockable service doors
- Lockable storage and accessories compartment
- Lockable storage box
- Main switch, electric, with timer
- Main switch, manual, lockable
- Protection grid on radiator fan
- Safe uppercarriage side access platform
- Sound insulation
- Swing drive gearbox oil level, visible from the cab
- Swing-out radiators
- Windshield washer fluid tank, accessible from ground level

## Hydraulic System

- Dedicated swing circuit
- Filter with integrated fine filters
- Hydraulic pressure measuring ports
- Liebherr Positive Control system with 2 independent circuits
- Magnetic rod
- Pressure accumulator for controlled lowering of equipment with engine turned off

## Engine

- Air filter with automatic dust ejector
- Automatic engine idling / speed increase, controlled via joystick sensors
- Common-Rail injection system
- Exhaust gas after-treatment system – SCR
- Fixed geometry turbocharger
- Fuel fine filter
- Fuel pre-filter and water separator
- Fuel priming pump
- Intercooler
- Power Pack US EPA Tier 4 Final
- Stepless adjustable engine speed

## Operator's Cab

- 7" multifunction color touchscreen
- Air conditioning, automatic, tri-zone, controlled via display
- Armrests adjustable in width, height and inclination
- Bottle holder
- Cab air filters housing, accessible from ground level
- Cab door sliding windows
- Cigarette lighter
- Coat hook
- DEF consumption on touchscreen
- DEF level on touchscreen
- Electric socket in cabin (12 V)
- Electric socket in cabin (24 V)
- Emergency hammer
- Engine oil level on touchscreen
- Fuel consumption on touchscreen
- Fuel level on touchscreen
- Hydraulic oil level on touchscreen
- Interior lighting
- Laminated right hand side window
- LIDAT Plus (Liebherr data transfer system)\*
- Mechanical hour meters, visible from ground level
- Mobile phone storage net
- Movement priority between swing and boom, adjustable via touchscreen
- Movement priority for stick-in, adjustable via touchscreen
- Rain hood over front window opening
- Rearview mirror
- Rear view monitoring camera
- Rear window emergency exit
- Right hand side view monitoring camera
- Roll-down sun blinds for windshield and roof window
- ROPS safety cab structure (ISO 12117-2)
- Rubber floor mat, fixed on floor and removable
- ShortKey button on joystick configurable
- Storage box
- Storage nets
- Storage spaces
- Swing braking torque adjustable via touchscreen
- Tilttable console left
- Tinted windows
- Visco-elastic damping
- Windscreen wiper and washer
- Work mode selector

## Equipment

- Anti-drift system boom cylinders
- Anti-drift system stick cylinder
- Boom cylinders regeneration
- Pipe fracture safety valve for stick cylinder
- Pipe fracture safety valves for boom cylinders
- Pivot points made of cast steel
- SAE split flanges on high pressure lines
- Stick cylinder regeneration

\* optionally extendable after one year

# Equipment Standard/Option

## Undercarriage

Chain guide 1 piece	•
Chain guide 2 pieces	+
Chain guide 3 pieces	+
Chain guide 4 pieces	+
Chain guide full length	+
Cover and base plate for undercarriage center section	•
Reinforced cover and base plate for undercarriage center section	+
Special painting	+
Steps	•
Steps wide	+
Track pads triple grouser 600 mm/24" / 700 mm/28" / 900 mm/35"	+
Track pads triple grouser 800 mm/31"	•
Track pads triple grouser reinforced 600 mm/24" / 700 mm/28" / 800 mm/31"	+
Tracks, sealed and greased	•
Tracks, sealed and greased, reinforced	+
Undercarriage LC	+
Undercarriage WLC	+
Undercarriage storage compartment	+

## Uppercarriage

Air pre-filter with cyclonical dust trap	+
Boxing ring	+
Centralized lubrication system (automatic)	•
Centralized lubrication system (manual)	+
Counterweight heavy 9.4 t/20,720 lb	+
Counterweight standard 8.4 t/18,520 lb	•
Electric socket on uppercarriage (24 V)	+
Extended tool set including tool box	+
External starting aid (24 V)	+
Fuel anti-theft protection	+
Headlight on uppercarriage, front left, LED+, 1 piece, protection included	+ <sup>1)</sup>
Headlight on uppercarriage, front right, LED, 1 piece, protection included	• <sup>1)</sup>
Headlight on uppercarriage, front right, LED+, 1 piece, protection included	+ <sup>1)</sup>
Headlight on uppercarriage, lateral left, LED+, 1 piece	+ <sup>1)</sup>
Headlight on uppercarriage, lateral right, LED+, 1 piece	+ <sup>1)</sup>
Headlights on uppercarriage, rear, LED+, 2 pieces	+ <sup>1)</sup>
Lighting for tank area <sup>1)</sup>	+
Lighting for uppercarriage access <sup>1)</sup>	+
Pre-heating system for fuel	+
Radiator fine mesh protection grid	+
Reflective warning stickers	+
Reversible fan drive	+
Skyview 360°	+
Special painting	+
Tank refilling pump fuel	+
Tool set including storage case	•
Uppercarriage bottom and side protection	+
Uppercarriage bottom closure sheets	•



## Hydraulic System

Bypass filter for hydraulic oil	+
Liebherr hydraulic oil	•
Liebherr hydraulic oil, adapted for extreme climate conditions	+
Liebherr hydraulic oil, biodegradable	+



## Engine

Automatic engine shutdown after idling	+
Engine shut-down with overrun	+
Lighting for engine compartment <sup>1)</sup>	+



## Operator's Cab

3" seat belt with retractor, orange color	•
4-points seat belt	+
Acoustic travel alarm deactivatable	+
Auxiliary heater programmable	+
Bottom windscreen wiper	+
Cool box (12 V)	+
Dark tinted windows	+
Electrically adjustable and heated outside rear-view mirrors	+
Electronic immobilizer	+
Emergency stop in cab	+
FGPS front guard	+
FGPS front guard tiltable	+
Filter for hydraulic hammer return flow	+
Fire extinguisher	+
First-aid box	+
Footrest	+
FOPS top guard	+
FOPS top guard flat	+
Handrests elevated for joysticks	+
Headlights on cab, front, LED, 2 pieces	• <sup>1)</sup>
Headlights on cab, front, LED+, 2 pieces	+ <sup>1)</sup>
Headlights on cab roof, front, LED+, 2 pieces	+ <sup>1)</sup>
High pressure circuit bypass	+
High pressure circuit switchable on pedals or mini-joystick	+
High pressure circuit with Tool Control (20 attachment adjustments on display)	+
Impact resistant one-piece windscreen	+
Impact resistant roof window	+
Integral protection guard	+
Laminated roof window	•
Luminosity control (LED+ headlights) <sup>1)</sup>	+
Medium pressure circuit	+
Mini-joysticks proportional	•
Movement restriction for boom	+
Movement restriction for stick	+
Operator seat Comfort	•
Operator seat Premium	+
Overload warning system	+
Preparation for machine guidance system	+
Preparation for tiltrotator	+
Preparation for weighing system	+
Radio Comfort	+
Radio pre-installation	•
Retractable laminated two-piece windscreen	•
Roof sun shield	+
Roof window wiper	+
Rotating beacon on cabin, LED, 1 piece	+
Seat belt reminder	+
Special painting	+
Sun visor	+
Switch between high pressure and bucket cylinder controls	+
Windscreen bottom protection grid	+



## Equipment

Boom bottom protection	+
Bucket cylinder rod protection	+
Centralized lubrication extended for connecting link	+
Floating boom	+
Headlight guard on boom, right	+
Headlight guards on boom, right and left	+
Headlight on boom, left, LED+, 1 piece	+ <sup>1)</sup>
Headlight on boom, right, LED, 1 piece	• <sup>1)</sup>
Headlight on boom, right, LED+, 1 piece	+ <sup>1)</sup>
Headlight on stick, bottom, LED+, 1 piece	+ <sup>1)</sup>
LIKUFIX electric signal plug	+
LIKUFIX for quick coupler SWA 66 hydraulic	+
Mono boom 6.45 m / <b>21'2"</b>	+
Mono boom SME 6.15 m / <b>20'2"</b>	+
Quick coupler SWA 66 hydraulic	+
Quick coupler SWA 66 mechanical	+
Special painting	+
Stick 2.60 m / <b>8'6"</b>	+
Stick 2.90 m / <b>9'6"</b>	+
Stick 3.25 m / <b>10'8"</b>	+
Stick 3.95 m / <b>13'</b>	+
Stick SME 2.15 m / <b>7'1"</b>	+
Stick SME 2.60 m / <b>8'6"</b>	+
Stick bottom protection	+
Tool Management	+

• = Standard, + = Option

<sup>1)</sup> Equipment not individually available, but only as predefined lighting packages

Non-exhaustive list, please contact us for further information.

Options and/or special equipments, supplied by vendors other than Liebherr, are only to be installed with the knowledge and approval of Liebherr in order to retain warranty.





